



Mental health! Relationship! Old age!

# MIND EXPO

Connecting Minds, Strengthening Bonds Uplifting Lives

SPHOORTHY PRESENTS

# MIND EXPO 2026

India's Premier Mental Health, Wellness & Relationship Expo

• Connecting Minds • Strengthening Bonds • Uplifting Lives



**2<sup>nd</sup>, 3<sup>rd</sup> & 4<sup>th</sup> SEPTEMBER 2026**  
(Wednesday - Friday)



**10:00 AM to 06:00 PM**



**ESCI, GACHIBOWLI,  
HYDERABAD, TELANGANA**



★ AMBASSADOR ★

**DR. PREETI REDDY**

(Vice Chairperson, MVV)



**DR. C. VEERENDER**  
Convenor



**VV RAO**  
Convenor



In Association With



**you&me**  
towards new beginnings

Counselling and P.D. Centre

[www.younme.co](http://www.younme.co)



OF GUIDING MINDS,  
EMPOWERING LIVES

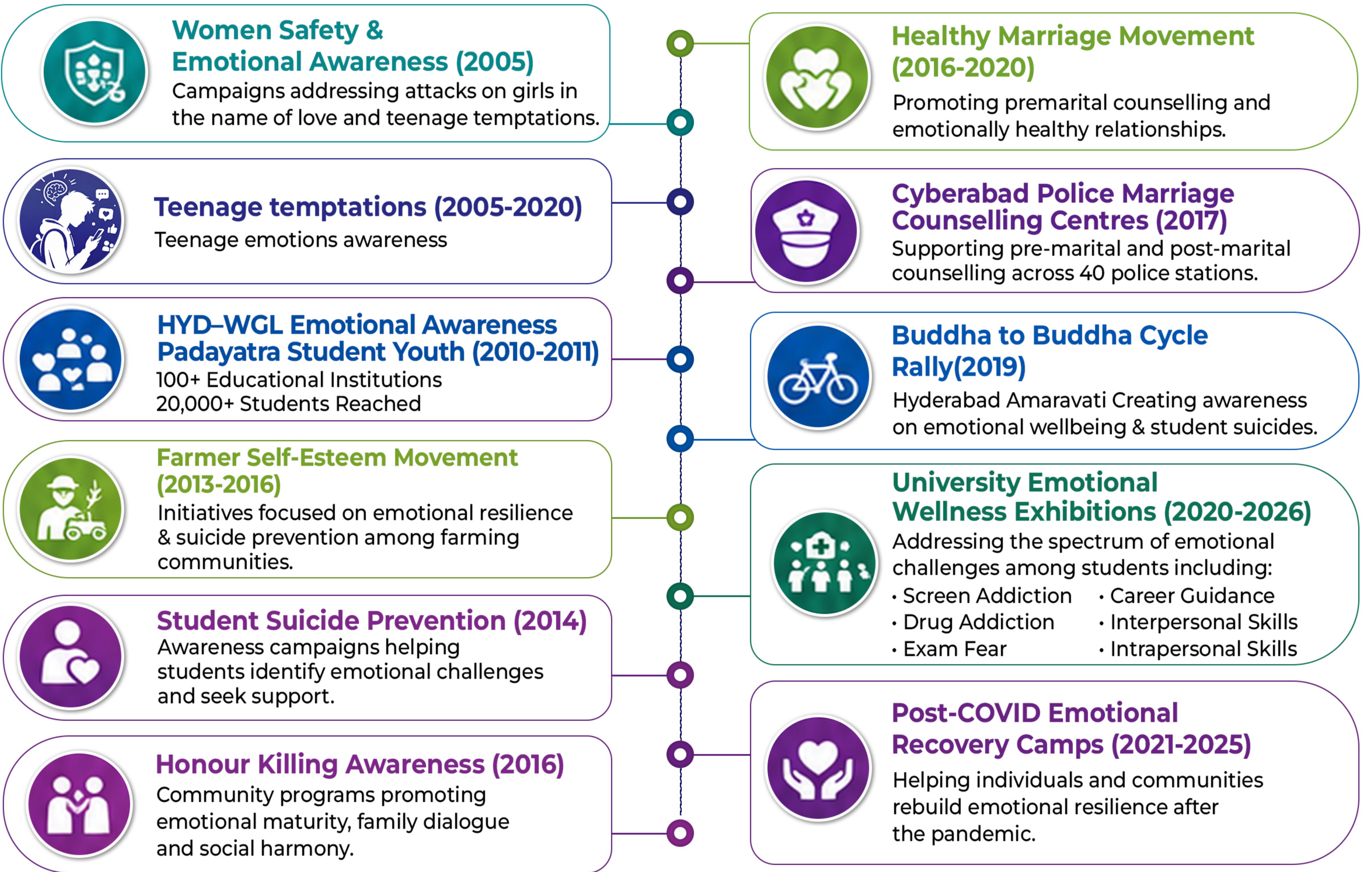
# ABOUT THE ORGANIZERS

Building Emotionally Stronger Individuals, Families & Communities Since 2005



Sphoorthi is a social initiative focused on emotional awareness and is supported by its social research partner, You & Me. Over the past two decades, it has created a significant impact on society through various awareness campaigns and community initiatives.

## OUR JOURNEY OF IMPACT FROM 2005 TO TODAY



<p><b>20+</b> Years of Social Impact</p>	<p><b>100+</b> Institutions Connected</p>	<p><b>20,000+</b> Students Reached</p>	<p><b>10,000+</b> Lives Influenced</p>
--	---	--	--

*"A healthier society begins when every individual feels heard, supported and emotionally empowered."*

# WHY MIND EXPO-2026?

A National Movement Towards Mind Wellness



Mental health challenges are increasing across every age group and section of society.



1 IN 7 INDIANS EXPERIENCE MENTAL HEALTH CHALLENGES

Today's society faces growing concerns around:



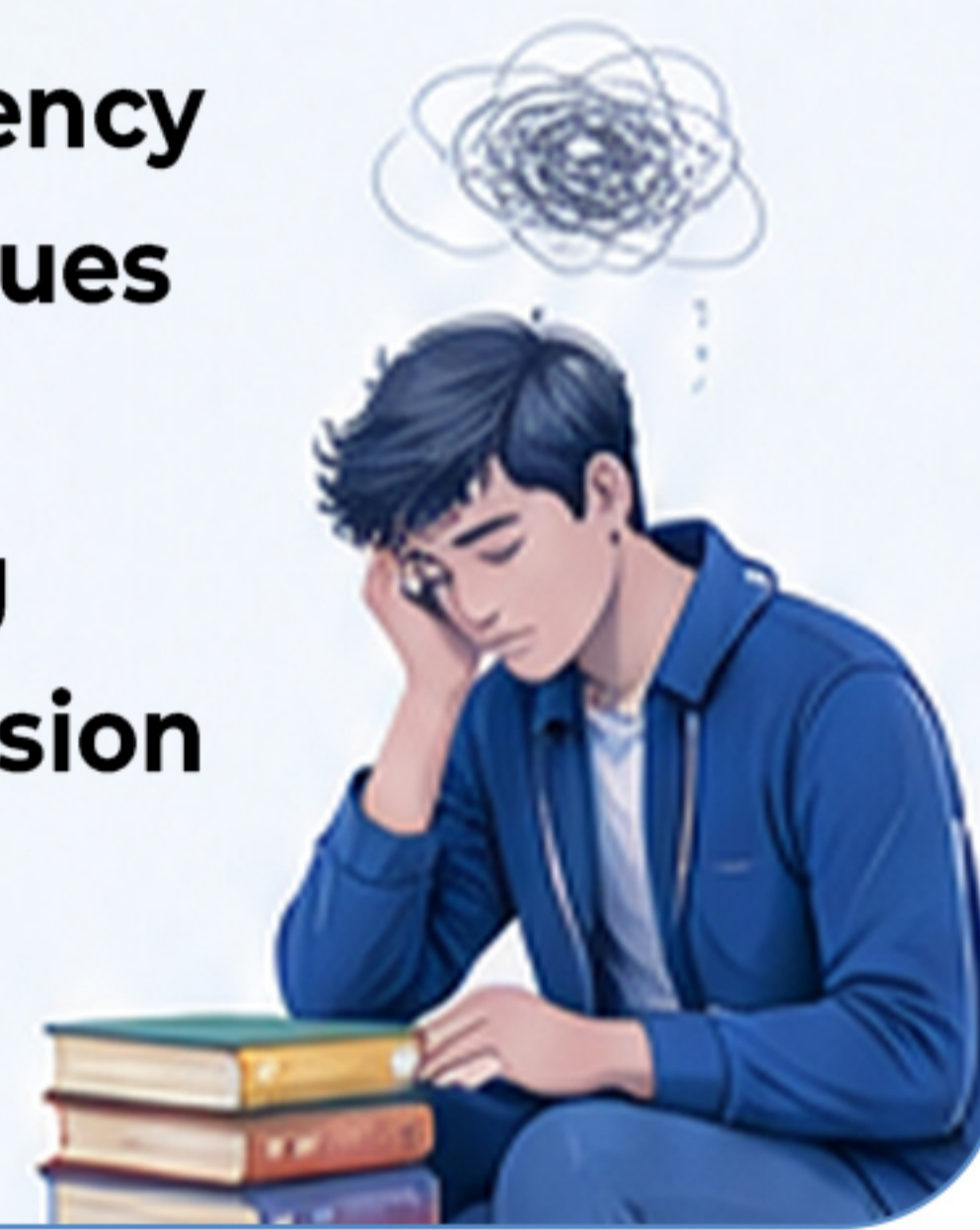
## Mental & Emotional Wellness

- Anxiety
- Depression
- OCD
- Personality Disorders
- Addiction Recovery (Drug, Screen, Online Gaming, Betting, Porn)



## Youth & Student Wellbeing

- Academic Pressure
- Screen Addiction
- Career Confusion
- Digital Dependency
- Relationship Issues
- Loneliness
- Drugs & Betting
- Anger & Aggression
- Eating Disorder



## Family & Relationship Health

- Marriage Counselling
- Parenting Challenges
- Family Therapy
- Relationship Wellness
- Infidelity
- Couple Conflicts
- Spouse Killings
- Pregnancy Issues
- Impotency
- Divorce
- Second Marriage
- Single Parent
- LGBTQ+



## Child Development & Special Needs

- Autism
- ADHD
- Learning Disabilities
- Behavioural Support
- Conduct Disorder



## Workplace Wellness

- Stress
- Burnout
- Employee Wellbeing
- Extramarital Affairs



## Healthy Ageing & Senior Care

- Dementia
- Alzheimer's
- Elder Care
- Empty Nest Syndrome



## Technology & Future Mind

- AI & Human Behaviour
- Cyber Wellness
- Digital Addiction



Mind Expo 2026 is set to inspire and empower lakhs of students and families, fostering emotional wellbeing, stronger relationships, and a healthier future for generations to come.



# EVENT HIGHLIGHTS

— A Three-Day Immersive Experience —



## Expert Conferences

Leading psychologists, psychiatrists, doctors, educators, wellness leaders, and researchers.



## Panel Discussions

Critical conversations on mental health, relationships, youth wellbeing, addiction, ageing, and social challenges.



## Live Consultation Pavilion

On-the-spot counselling guidance, mental wellness assessments, screenings, and expert consultations.



## Innovation & Technology Zone

Mental health apps, AI-driven wellness platforms, telehealth services, and assistive technologies.



## Awareness Campaigns

Public engagement initiatives focused on reducing stigma and increasing access to support. digital media shows



## Workshops & Interactive Sessions

Stress management, parenting, emotional intelligence, mindfulness, workplace wellness, and relationship health.



## Networking Sessions

B2B opportunities connecting healthcare, education, corporate, wellness & social sectors.



## Psychology Experience Zone

Interactive psychology exhibits, personality assessments, brain games, puzzles, and cognitive challenges promote mental wellness and self-discovery.



## Community Outreach Programs

Creating large-scale awareness and social impact.

## WHO CAN ATTEND?

EVERYONE IS WELCOME.

A Platform for Every Mind.  
Join the Movement for  
A Mentally Healthier Tomorrow.



## Professional Audience

- Counsellors
- Psychologists
- Psychiatrists
- Hospital Administrators
- Healthcare Professionals
- LGBTQ + Clinics
- Rehabilitation Centres
- NGOs, Advocates
- Schools & Universities
- Corporate HR Leaders
- Wellness Brands
- Technology Providers
- Media persons
- Therapists



Stronger Minds • Stronger Families • Stronger Society

Together, Let's Build A Mentally Healthy India.



# WHY SPONSOR MIND EXPO-2026?



## BRAND VISIBILITY

Reach thousands of families, professionals, institutions and decision-makers across India.



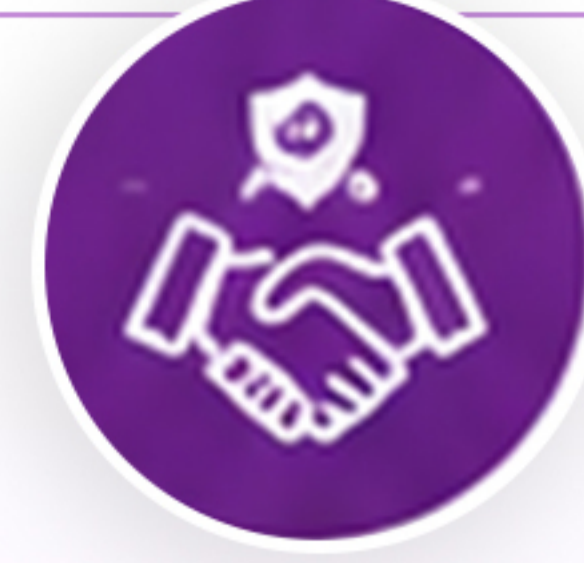
## LEAD GENERATION

Connect directly with high-intent audiences and stakeholders.



## DIRECT CUSTOMER ENGAGEMENT

Engage face-to-face with visitors and build lasting relationships



## COMMUNITY TRUST BUILDING

Align with a trusted platform driving awareness, accessibility and social change.



## THOUGHT LEADERSHIP

Share your expertise, speak on key panels and shape the future of mental wellness.



## CSR ALIGNMENT

Create measurable social impact and strengthen your CSR commitments.



## STRATEGIC PARTNERSHIPS

Collaborate with healthcare, education, wellness and government stakeholders.



## BUSINESS DEVELOPMENT OPPORTUNITIES

Explore new markets, launch solutions and drive long-term growth.

## IDEAL SPONSORS & EXHIBITORS



### HEALTHCARE & MEDICAL SERVICES

- Multi-Speciality Hospitals
- Specialty Clinics
- Diagnostic & Imaging Centres
- Rehabilitation & Physiotherapy Centres
- Wellness Centres



### MENTAL HEALTH & THERAPY

- Psychologists
- Psychiatrists
- Counsellors
- Marriage & Family Therapists
- Behavioural & Occupational Therapists
- De-Addiction Centres
- Therapy & Mental Wellness Centres



### WELLNESS, YOGA & MINDFULNESS

- Yoga Organisations
- Meditation & Mindfulness Centres
- Spiritual Wellness Institutions
- Holistic Health Providers



### MEDICAL SPECIALISTS

- Neurologists
- Urologists
- Sexologists
- Geriatric Care Specialists
- Ayurveda
- Homeopathy



### HEALTHCARE PRODUCTS & NUTRITION

- Pharmacy Chains
- Pharmaceutical Companies
- Nutritional Wellness Brands
- Food Supplement Companies
- Health Monitoring & Medical Device Brands



### EDUCATION & CHILD DEVELOPMENT

- Schools, Colleges & Universities
- Autism & ADHD Centres
- Special Education Institutions
- Career Guidance & Development Organisations



### RELATIONSHIP & FAMILY SUPPORT

- Marriage Counsellors, Bureaus
- Family Therapists
- Relationship Coaches
- Divorce Counselling Services
- Family Law Firms & Legal Advisory Services



### CORPORATE WELLNESS & SOCIAL IMPACT

- Employee Wellness Providers
- HR Consulting Firms
- Health & Life Insurance Providers
- CSR Foundations & NGOs



### SENIOR CARE & ASSISTED LIVING

- Elder Care Organisations
- Assisted Living
- Communities
- Dementia Care
- Providers
- Home Healthcare
- Services



### TECHNOLOGY & INNOVATION

- Mental Health Apps
- AI Healthcare Platforms
- Wellness Technology Companies
- Digital Health Solutions
- Mental Health Technology

# SPONSORSHIP OPPORTUNITIES

Partner with Purpose. Make an Impact. Grow Together.

## PLATINUM PARTNER

Investment:  
₹10,00,000

- ✓ Co-Title Partner Status
- ✓ 4 Premium Stalls (8mx2m)
- ✓ Brand Visibility
- ✓ Full Page Advertisement
- ✓ VIP Guest Access
- ✓ Entrance Branding
- ✓ Media & PR Visibility
- ✓ Dedicated Social Media Campaign
- ✓ Main Stage Backdrop Branding
- ✓ Leadership Speaking Opportunity
- ✓ Two-Page Corporate Feature Article
- ✓ Audio Announcements



## DIAMOND PARTNER

Investment:  
₹5,00,000

- ✓ Premium Branding at Podium, Entrance Area & Key Exhibition Zone
- ✓ Media Exposure
- ✓ 3 Premium Stalls (6m x 2m)
- ✓ Full Page Advertisement in Souvenir
- ✓ Two-Page Corporate Profile
- ✓ VIP Access
- ✓ Audio Announcement
- ✓ Brand Visibility



## GOLD PARTNER

Investment:  
₹3,00,000

- ✓ "Powered By" Branding
- ✓ Stage Recognition
- ✓ 2 Premium Stalls (4m x 2m)
- ✓ Brand Visibility
- ✓ Full Page Advertisement in Souvenir
- ✓ Networking Opportunities
- ✓ 1 Page Corporate Article
- ✓ Audio Announcement



## SILVER PARTNER

Investment:  
₹2,00,000

- ✓ Branding Visibility
- ✓ 1 Stall (2m x 2m)
- ✓ Half Page Advertisement in Souvenir
- ✓ Half Page Organisation Profile
- ✓ Partner Recognition
- ✓ Audio Announcement



## EXHIBITOR STALL

Investment:  
₹40,000

- ✓ 1 Stall (2m x 2m)
- ✓ Direct Customer Interaction
- ✓ Product & Service Demonstration
- ✓ Lead Generation
- ✓ Networking Opportunities
- ✓ Audio Announcement



### STALL INCLUDES



Table



Two  
Chairs



Power  
Connection



Air Conditioned  
Exhibition Hall

# MIND EXPO COMMITTEE

## HON.ADVISORS



**Dr JANARDHAN REDDY**  
(IAS( rtd) ASCI)



**SRI VENKATRAM REDDY**  
(IAS( rtd), MLC)

## PATRON



**SRI AMOY KUMAR**  
IAS  
Jt Secretary, Govt Of TG



**SRI VC SAJJANAR**  
DGP  
Commissioner of Police, Hyd



**SRI SANDEEP SHANDILYA**  
IPS  
Director, EAGLE Force, Telangana.



**SRI SHYAMLAL**  
IAS  
Director, civil supplies.TG

## ADVISORS



**V PRAKASH**  
Ex Chairman TSWRDC.



**PROF. RAJESH KUMAR**  
Dept.of  
phy education, OU.Hyd



**LAXMAN PRASAD SHUKLA**  
Chairman, bion therapeutics pvt.ltd.



**Mr. LACHIREDDY**  
Spl. Grade Dy collector,  
chairman TGEJAC



**Dr CHANDRAKANT**  
(Maxillofacial Surgeon)



**Dr SRINIVAS CHARY**  
Chairman, Visva  
vishwani institutions.



**SHRI BADRINATH**  
(Retd. DCP)



**Dr N BALACHARY**  
Sec TG sahitya  
akademi, Hyd

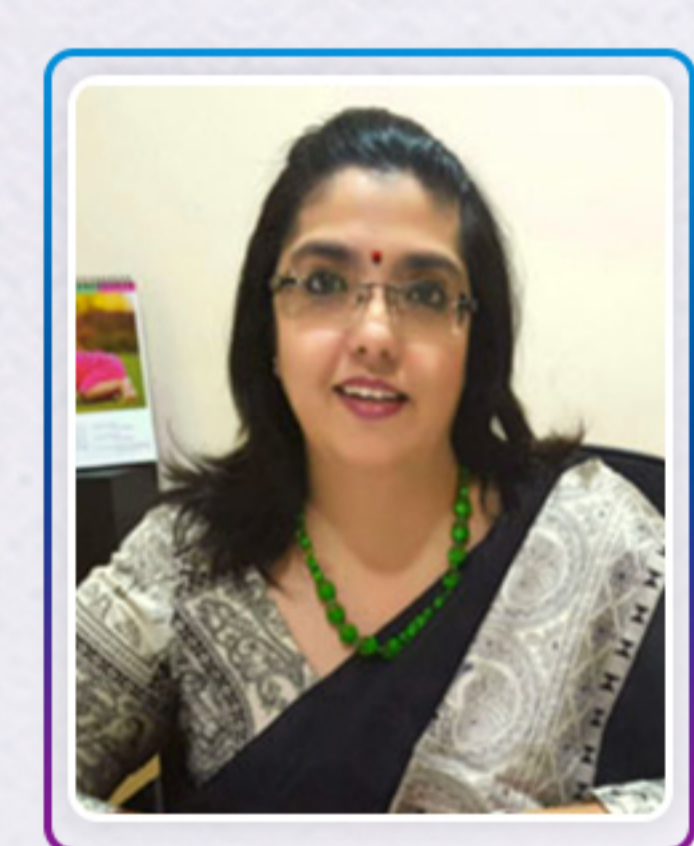


**K. VIRAHATH ALI**  
State President,  
Telangana state union  
of working journalists(TUWJ)

# PROFISSIONAL SPEAKERS



**Dr BHANU PRAKASH**  
Scientist - NIN



**Dr PRAGYA RASHMI**  
Clinical Psychologist



**Dr PURNIMA NAGARAJA**  
Psychiatrist



**Dr SRIKRISHNA**  
Clinical Psychologist



**Dr PRAVEEN KUMAR**  
Psychiatrist Apollo Hospital



**Mr SHESHAGIRI JOSHI**  
Rehab. Psychologist



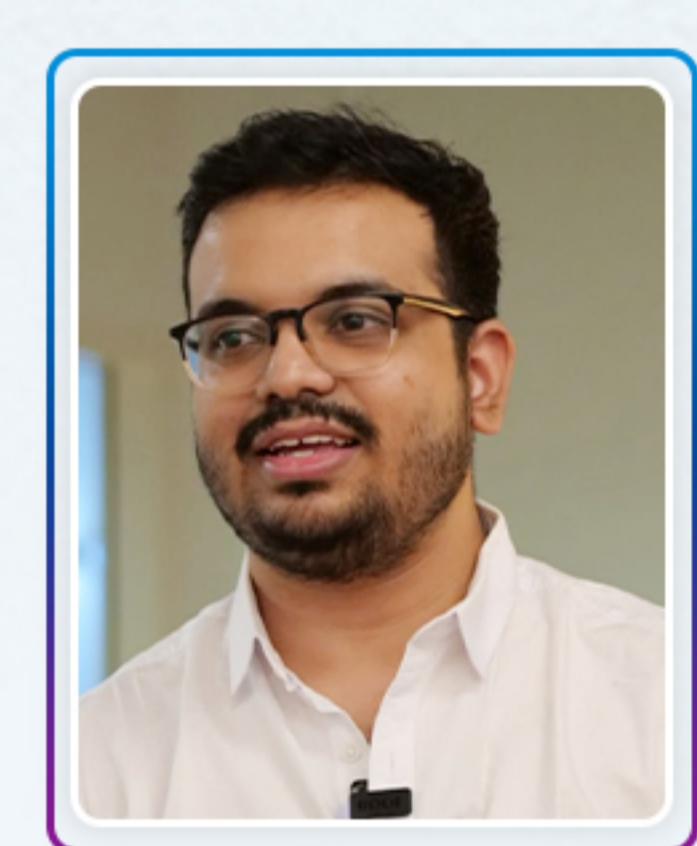
**Dr CHALLA BHARATHI**  
Psychiatrist



**Dr VENKATESHWAR RAO**  
Psychologist



**Dr SHIVA KUMAR**  
Clinical Psychologist



**DR MADHU VAMSI GANDURI**  
Psychiatrist & De-addiction  
Specialist



**Dr SUCHARITHA**  
Psychologist



**Dr RAGHU TEJA,**  
Gut health specialist,  
laparoscopic surgeon.

# EXPO MEMBERS



**DR SRINIVAS REDDY**  
(USA)



**SRIDHAR NAGULAVANCHA**



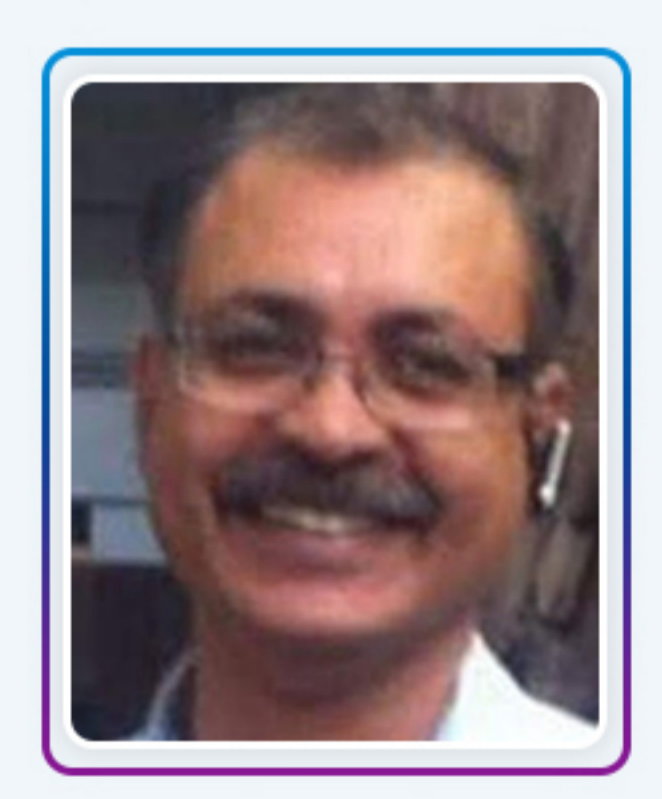
**RAVINDRA BABU**



**NISCHITH**



**C S PRAKASH**  
Finance Officer (Retd.), TGCE



**B.MUKUNDRAO**  
AGM (RTD). Sbi.



**DR RAGHAVENDRA**  
Psychiatrist



**INDEEVAR NEMANI**

# SPHOORTHI MEMBERS



**VV RAO**  
President



**C. MAHENDER**  
Vice President



**SHRI BADRINATH**  
(Retd. DCP)  
Vice President



**DR. C. VEERENDER**  
Gen Secretary



**A. SHIVA PRASAD**  
Joint Secretary



**PUYUSH**  
Joint Secretary

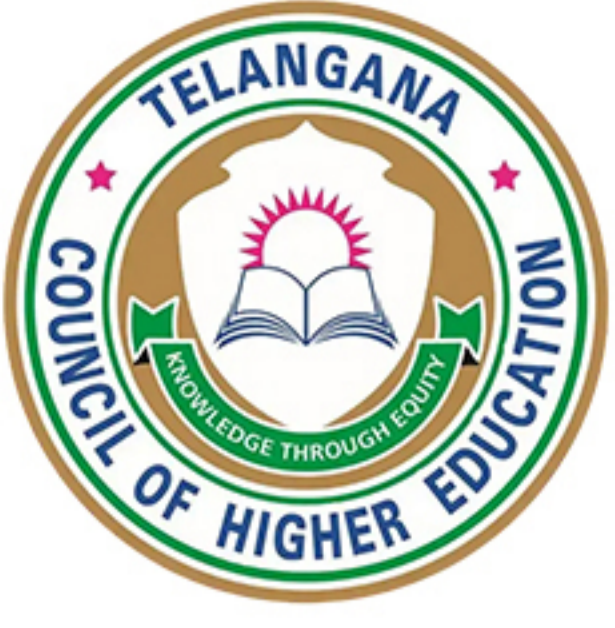


**GYANDA**  
Joint Secretary



**C. SURENDAR**  
Treasurer

# SUPPORTED BY



## BE A PARTNER IN BUILDING A MENTALLY HEALTHIER SOCIETY

Mind Expo 2026 is more than just an exhibition; it is a social movement dedicated to improving mental well-being, strengthening relationships, and promoting healthy ageing.



### Join Us As

- Sponsor
- Exhibitor
- Knowledge Partner
- Healthcare Partner
- Community Partner

### CONTACT US

- +91 79895 52149
- +91 93907 71469
- [www.mindexpo.org](http://www.mindexpo.org)
- [info@mindexpo.in](mailto:info@mindexpo.in)

### QR Code



Mental health! Relationship! Old age!

# MIND EXPO 2026

Venue: ESCI, Gachibowli, Hyderabad

Connecting Minds | Strengthening Bonds | Uplifting Lives